



GMT MONTHLY MEMBERSHIP PROGRESS REPORT

Results as of: 6/30/2017

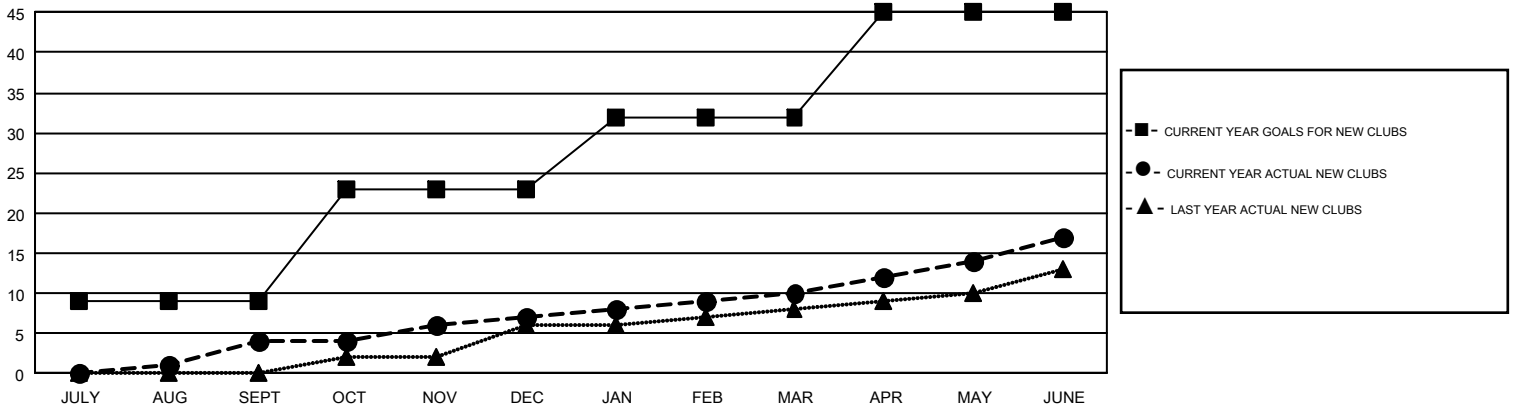
GMT Constitutional Area 1, Group C

GMT: OPEN

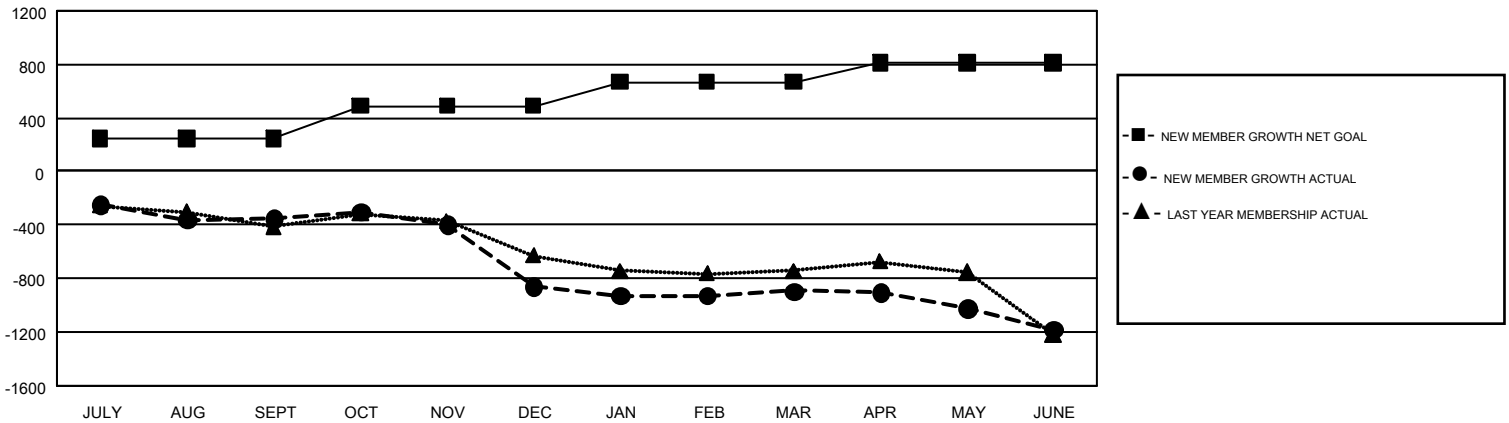
REPORT DOES NOT INCLUDE CLUBS IN UNDISTRICTED AREAS.

Clubs				Members			
RESULTS FOR 2016-2017				RESULTS FOR 2016-2017			
QUARTER	NEW CLUB GOAL	NEW CLUBS	DROPPED CLUBS	QUARTER	NEW MEMBER GROWTH NET GOAL (not reinstated or transfers)	NEW MEMBER GROWTH ACTUAL (not reinstated or transfers)	DROPPED MEMBERS ACTUAL (including transfers)
JULY/AUG/SEPT	9	4	6	JULY/AUG/SEPT	248	895	1,244
OCT/NOV/DEC	14	3	11	OCT/NOV/DEC	241	839	1,350
JAN/FEB/MAR	9	3	4	JAN/FEB/MAR	180	1,016	1,048
APR/MAY/JUNE	13	7	15	APR/MAY/JUNE	142	1,361	1,649

GOALS AND ACTUAL NEW CLUBS CUMULATIVE



GOALS AND ACTUAL MEMBERS CUMULATIVE



DROPPED CLUBS: 35	1,018 CLUBS OF 1,547 ADDED 1 OR MORE NEW MEMBERS	<u>GENDER DISTRIBUTION</u>
<u>DROPPED MEMBERS</u>	CLICK HERE FOR CUMULATIVE MEMBERSHIP DATA	MALE 30,446 (72.92%)
DECEASED 727		FEMALE 11,307 (27.08%)
CLUB CANCELLED 264		TOTAL FAMILY UNIT MEMBERS 7,745
OTHER 4,299		FAMILY MEMBERS PAYING HALF DUES 3,975
TOTAL 5,290		